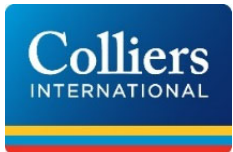
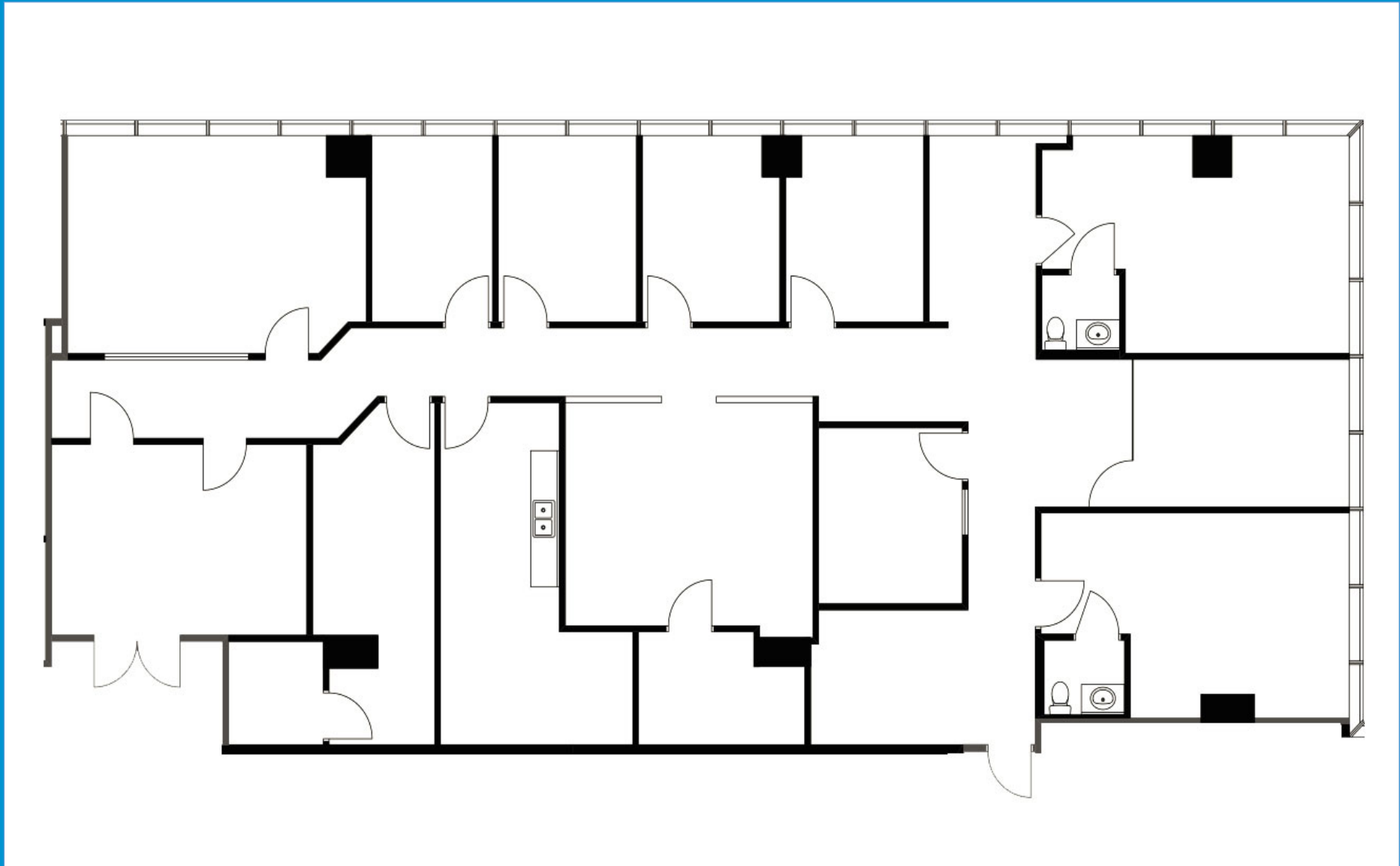


# Harbour Centre at Aventura

SUITE 1011 | 4,422 SF

18851 NE 29<sup>th</sup> Avenue | Aventura, FL



Jonathan Kingsley  
Executive Managing Director  
+1 954 652 4610  
[jonathan.kingsley@colliers.com](mailto:jonathan.kingsley@colliers.com)

Ilyssa Ettelman  
Associate  
+1 954 652 4624  
[ilyssa.shacter@colliers.com](mailto:ilyssa.shacter@colliers.com)

*This document has been prepared by Colliers International for advertising and general information only. Colliers International makes no guarantees, representations or warranties of any kind, expressed or implied, regarding the information including, but not limited to, warranties of content, accuracy and reliability. Any interested party should undertake their own inquiries as to the accuracy of the information. Colliers International excludes unequivocally all inferred or implied terms, conditions and warranties arising out of this document and excludes all liability for loss and damages arising there from. This publication is the copyrighted property of Colliers International and/or its licensor(s). ©2020. All rights reserved*